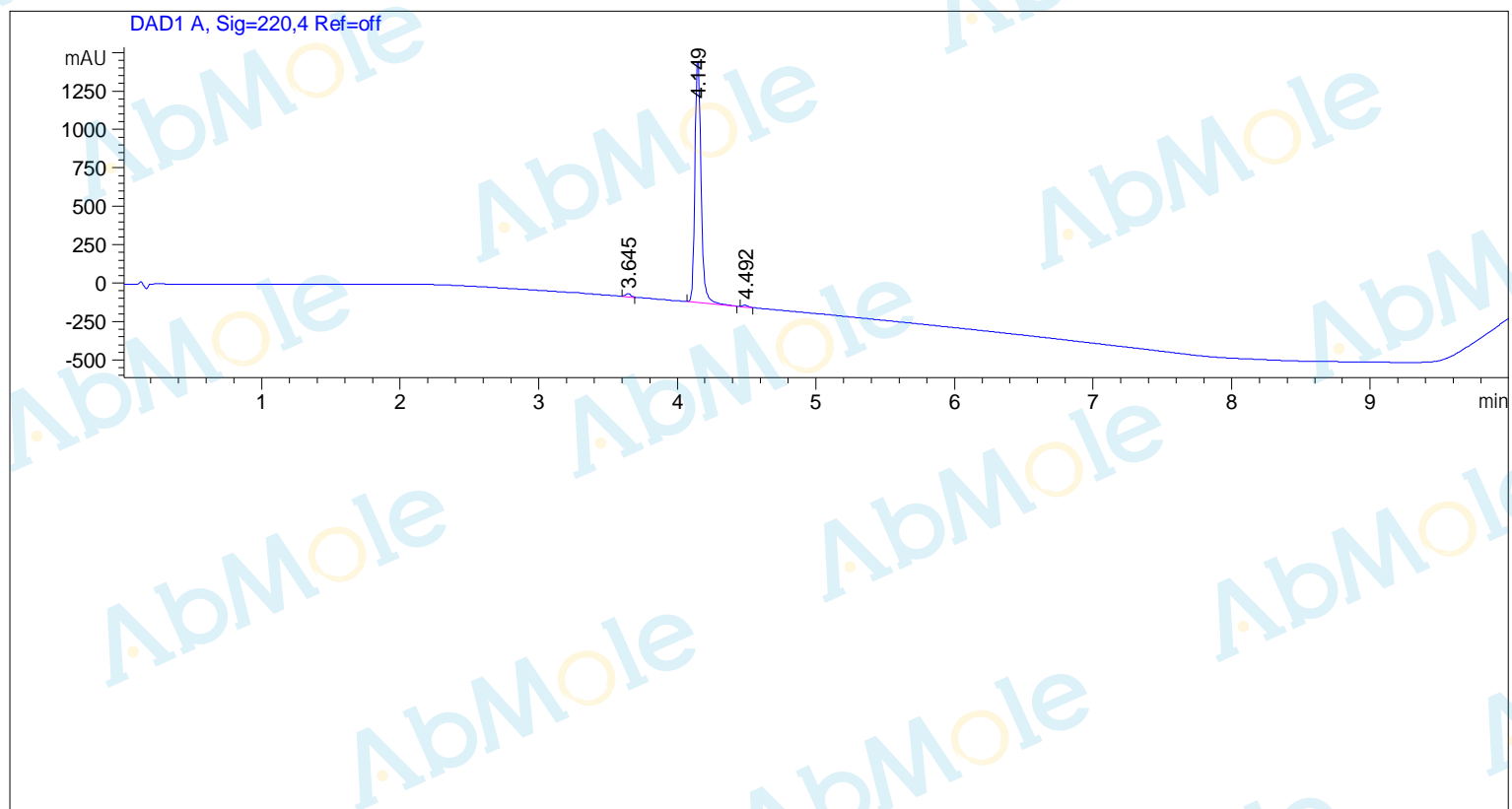


```

=====
Acq. Operator   : admin
Sample Operator : M6096-JQ-1 carboxylic acid-01
Acq. Instrument : 3
Location       : P1-F-03
Inj            : 1
Inj Volume     : 0.100 µl
Different Inj Volume from Sample Entry! Actual Inj Volume : 3.000 µl
=====

```



=====
Area Percent Report
=====

```

Sorted By      : Signal
Multiplier     : 1.0000
Dilution      : 1.0000
Do not use Multiplier & Dilution Factor with ISTDs

```

Signal 1: DAD1 A, Sig=220,4 Ref=off

Peak #	RetTime [min]	Type	Width [min]	Area [mAU*s]	Height [mAU]	Area %
1	3.645	MM	0.0466	55.40742	19.83029	1.1158
2	4.149	BB	0.0479	4868.37207	1583.19238	98.0430
3	4.492	MM	0.0531	41.76650	13.10425	0.8411

Peak #	RetTime [min]	Type	Width [min]	Area [mAU*s]	Height [mAU]	Area %
Totals :				4965.54599	1616.12692	